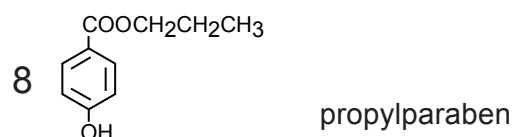
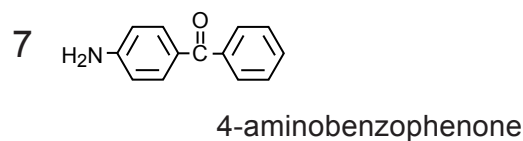
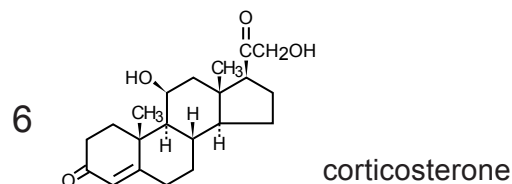
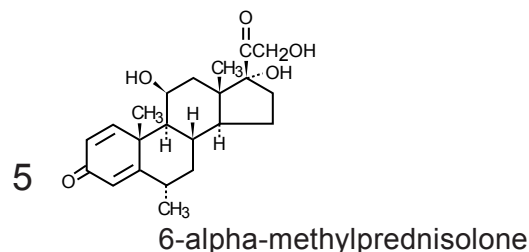
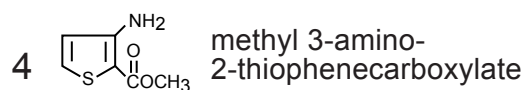
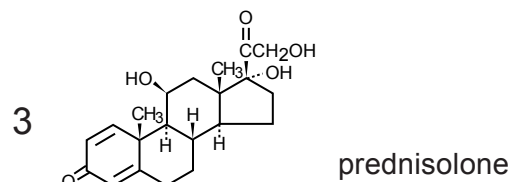
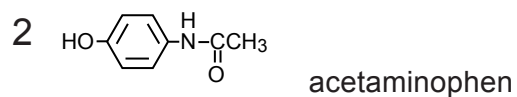
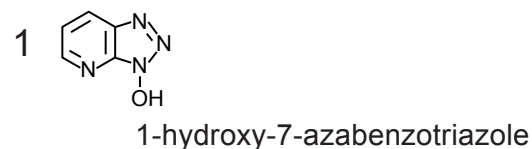
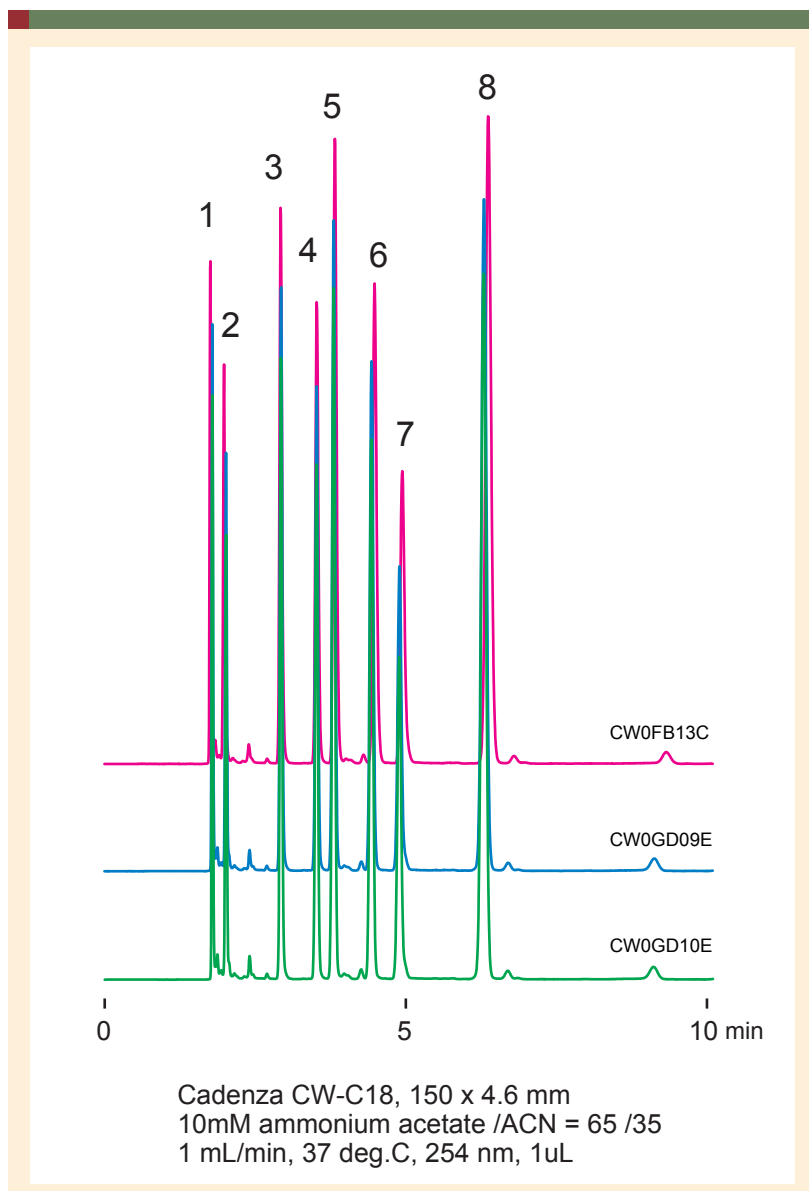


Cadenza CW-C18

Technical

Batch-to-batch reproducibility of CW-C18



Cadenza CW-C18 adopted the same "polymeric end-capping" technology as CD-C18, resulting in excellent peak shape.

The data above shows the batch to batch reproducibility for Cadenza CW-C18. As with a conventional normal-pore ODS column, Cadenza CW-C18 can be used for various LC methods. CW-C18 provides high-throughput, high-sensitivity, and excellent reproducibility.